

Youth Committee

Agenda

130 Kelly Square, Ste. 1, Lewisburg, PA 17837
Wednesday, May 13, 2026, 1:00 p.m.

Welcome & Call to Order	J. Ritter
Public Comment	
Review & Approval of Meeting Minutes	J. Ritter
Program Updates	A. Grose
<ul style="list-style-type: none">• PY25 Q2 Common Measures Review• PY25 Q3 Youth Program Goals Report	
Business Education Partnership (BEP) Grant Brainstorming	
Procurement Updates	
<ul style="list-style-type: none">• OSY RFP Update• ISY RFP Update	
Committee Priorities	J. Ritter
Open Discussion	J. Ritter
Date of Next Meeting	J. Ritter
<ul style="list-style-type: none">• August 12, 2026 from 10am-12pm at Advance Central PA	
Adjournment	J. Ritter

Youth Committee

Meeting Notes February 24, 2026

The Youth Committee of Advance Central PA held a Zoom Video Conference meeting on Tuesday, February 24, 2026.

The following members attended:

Joshua Bell
Jon Ritter
Stephanie Servose
Jenna Witherite

The following members were excused:

Jonah Howe

The following guests attended:

None

The following staff attended:

Allison Grose
Korrie Lucas
Erica Mulberger
Kelly Walter

Welcome & Call to Order

The meeting was called to order at 1:03 by Jon Ritter, Youth Committee Chair.

Public Comment

None.

Review & Approval of Meeting Minutes

- ▲ Joshua Bell made a motion to approve November 24, 2025, Youth Committee meeting minutes. Jenna Witherite seconded the motion. The motion was unanimously approved with no abstentions.

Jon announced that due to members needing to leave early, the Executive Session would be pushed to the beginning of the meeting.

Executive Session

Jon called for an Executive Session at 1:04 p.m. to discuss procurement of youth programming. Jon called for non-members to be excused at this point, however there were no non-members present for this meeting other than staff. At 1:53 p.m. Jon called Executive Session closed and re-convened to the public meeting.

Advance Central PA Updates

PY25 Common Measures Review

Allison Grose, Advance Central PA Youth Programs Coordinator, reviewed the Common Measures Performance for PY25 quarter two, noting that the data reflects the most current available information, which for some measures, is drawn from as far back as 2023. For the first quarter, all performance metrics exceeded the negotiated goals, with the exception of Measurable Skills Gain (MSG). She explained that MSG outcomes are historically lower in the first quarter, as participants are often still engaged in education or training and have not yet had sufficient time to achieve an MSG. Preliminary data for the second quarter indicates that MSG performance will be above the negotiated goal along with all other Common Measures.

Youth Program Goals Report

In-School Youth (ISY)

Allison reviewed In-School Youth (ISY) program performance for the first two quarters. Central Susquehanna Opportunities (CSO) exceeded goals for comprehensive registrations, while specialized registrations were lower than anticipated for the 3rd quarter. It is expected those registrations will increase in quarter 4, as there are Business Challenges and another Camp STEAM scheduled in spring. She also noted there are typically more specialized

enrollments and paid internships late in the program year, because most youth complete paid internships over the summer.

Joshua asked for insight into what the Business Challenge is, and Allison explained that a small group of ISY program participants are paired up with a local business, who gives them a real-world problem to solve. The participants are tasked with learning about the business and developing and presenting creative solutions to the assigned problem. Jon shared his experience hosting a Business Challenge at Playworld and how he enjoyed it.

Out-of-School Youth (OSY)

Out-of-School Youth (OSY) WIOA registrations for the first two quarters were approximately 50% of the annual goal and have reached about 60% of the goal as of present. Paid Pre-Work Experience attainment is at 30%, which does not meet expectations. Feedback from businesses indicate that current staffing shortages may be contributing to this outcome, as employers do not have the capacity to host internships.

Allison explained the difference between paid internship and On-the-Job Training (OJT). The primary goal of paid internship work experience activities is skill development and exposure to the workplace, not necessarily employment with the host company at the conclusion of the experience. A business cannot fill an open position through a paid internship. OJT, by contrast, applies to individuals who would not otherwise be hired as employees of the business for an open position, due to needing additional skill training beyond what a typical new hire would receive. The OSY program reimburses the business half of the participant's wage during an OJT, and the participant and business follow a carefully outlined training plan for the entirety of the OJT. The successful outcome to an OJT is continued employment that is unsubsidized.

Path to Careers Discussion

The Committee asked whether internship and job shadow placements for ISY and OSY come from Path to Careers and Allison affirmed that is the case. Both the ISY and OSY programs utilize the Path to Careers website when searching for experiences for their participants.

Allison shared a brief overview Path to Careers and highlighted updated statistics. Currently, there are 244 businesses registered on the platform and 221 experiences posted. The Business Solutions Team has had some success in engaging employers and encouraging them to post experiences, however, schools are not actively using the site. Members discussed and advised that while the increased registrations and experiences are positive, they are not high enough to be impactful; there must be enough opportunities on the site for a school to see value in using it and this is an area staff should continue to focus on.

When discussing site functionality, Allison explained students request experiences via an educator who then has ability to contact the business on their behalf. This approach was implemented due to concerns businesses had that students might reach out without being serious about or prepared for the experience. Jon asked whether there was any other reason students could not be allowed to initiate contact with businesses on their own, and whether there was a need for someone to receive credit for the connection. Allison responded that vetting the request is the reason for the current functionality and confirmed that there would be no loss of data if this were changed. Allison noted that she has spoken with many students about Path to Careers however, even when students are interested in participating, they are still unable to access experiences if their teachers or guidance counselors do not facilitate the connection.

Jon suggested staff continue to get the word out about the site so more businesses participate. He asked if staff would be attending the Industrial Development Forum in State College. Erica Mulberger, Advance Central PA Executive Director, responded that there was a conflicting state-level meeting at the same time, but agreed with Jon's thoughts about continuing to spread the work, including at existing meetings and with partnership groups.

Allison shared that she and Jamie Mercaldo, Advance Central PA Business Engagement Coordinator will hold a seminar at the Central PA Chamber of Commerce on March 4th, sharing with business members the benefits of registering on Path to Careers and posting experiences. They will assist participating businesses in completing their registration following the presentation.

Committee Priorities

Allison reminded the committee that during the Workforce Development Board (WDB) meeting in December, Jim Beamer requested reference materials be included in the WDB packet, outlining eligibility requirements and other relevant information for the various programs that operate in the PA CareerLink®. She asked committee members

what information they felt would be most useful to include. Jenna suggested highlighting the differences between ISY and OSY, including the requirements for each program. Jon noted that incorporating real-life examples could help make the information more understandable. Erica suggested including the Federal Poverty Income Guidelines.

Members also discussed agenda topics for future meetings and decided they would like to learn more about Business Education Partnership (BEP) grant projects.

Open Discussion

None.

Date of Next Meeting

Jon reminded everyone that the second quarter Youth Committee meeting will be held on May 13, 2026 at 10:00 a.m. at the Advance Central PA office in Lewisburg.

Adjournment

With no further business to discuss, Jon adjourned the meeting at 2:39 p.m.

Respectfully Submitted,

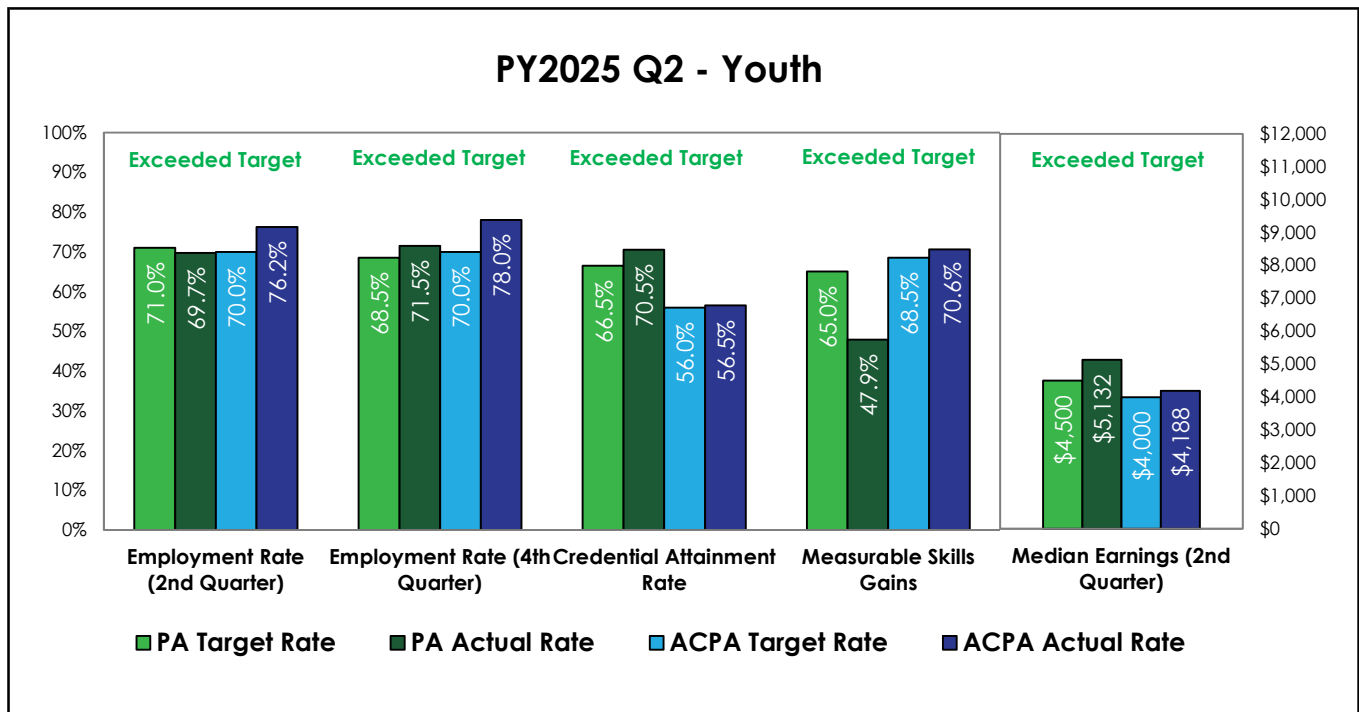


Kelly Walter, Office/Board Coordinator

Common Measure Performance - Youth Program Year 2025 Q2

Performance Metric	Youth			
	Numerator	Actual Performance	Negotiated Goal	% of Goal Achieved
	Denominator			
Employment Rate (2nd Quarter)	64	76.2%	70.0%	108.9%
	84			
Employment Rate (4th Quarter)	64	78.0%	70.0%	111.4%
	82			
Median Earnings (2nd Quarter)	-	\$4,188	\$4,000	104.7%
	-			
Credential Attainment Rate	26	56.5%	56.0%	100.9%
	46			
Measurable Skill Gains	24	70.6%	68.5%	103.1%
	34			
Average Program Score				✓ 105.8%

*Measurable Skill Gains are historically low in the first quarter as participants are in training and have not yet had opportunity to earn the gain.



Common Measure Definitions

Employment Rate (2nd Quarter) - % of participants in unsubsidized employment or education/training in the 2nd quarter after exit

Employment Rate (4th Quarter) - % of participants in unsubsidized employment or education/training in the 4th quarter after exit

Credential Attainment Rate - % of participants who during participation or within one year from exit: 1) attain a high school diploma/equivalent along with employment or enrollment in postsecondary training, or 2) attained a postsecondary credential

Measurable Skills Gain - % of Adults in an education or training program who achieve milestone skill gains including but not limited to an increase in basic skills or completion of an OJT within the program year

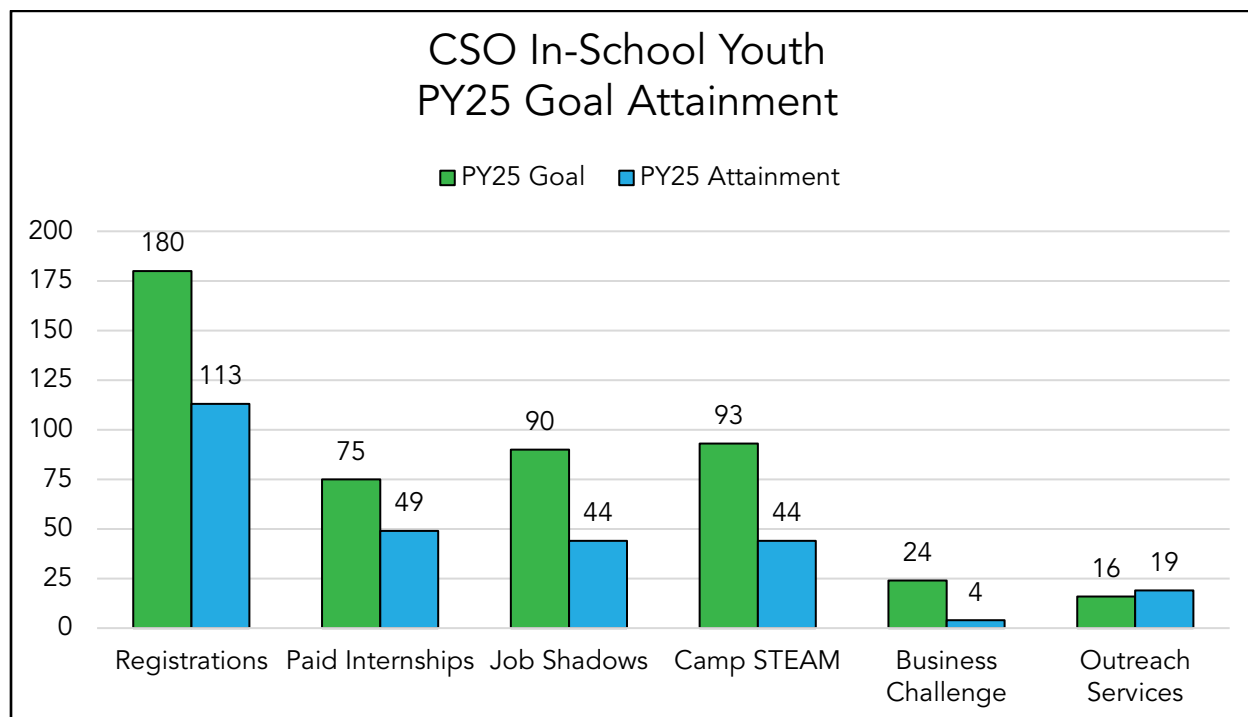
Median Earnings - Median earnings of Adults who have unsubsidized employment during the 2nd quarter after exit

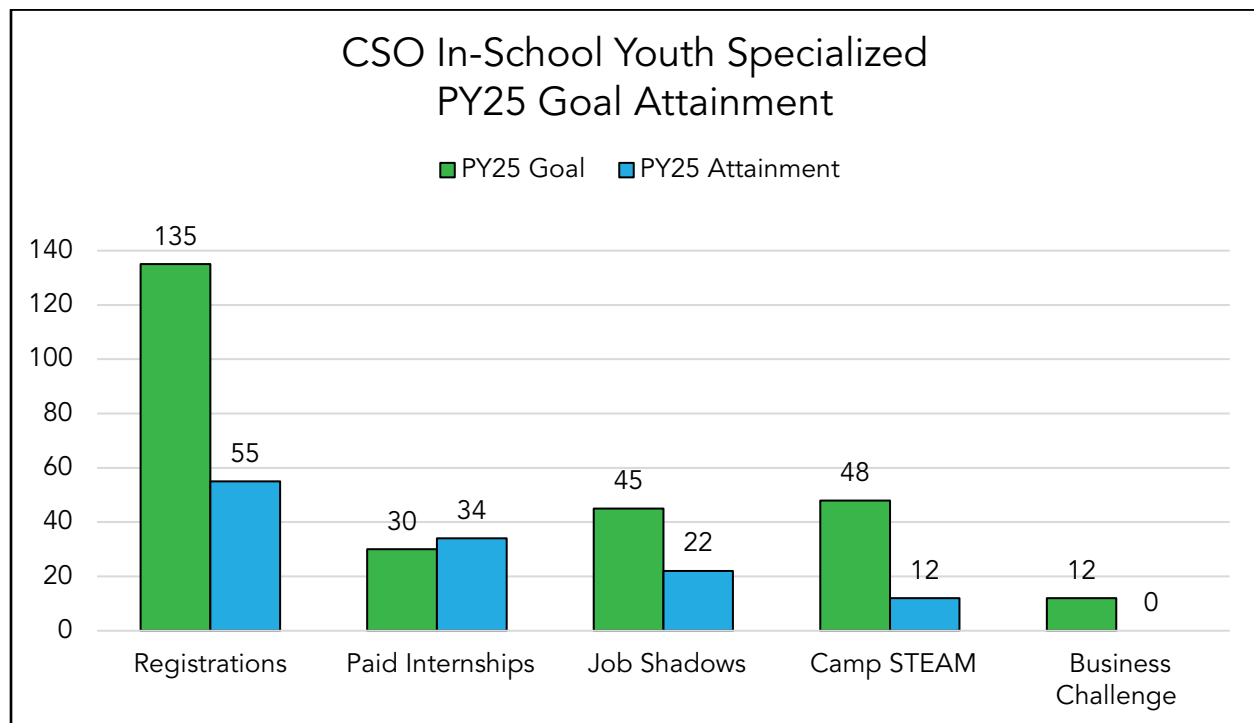
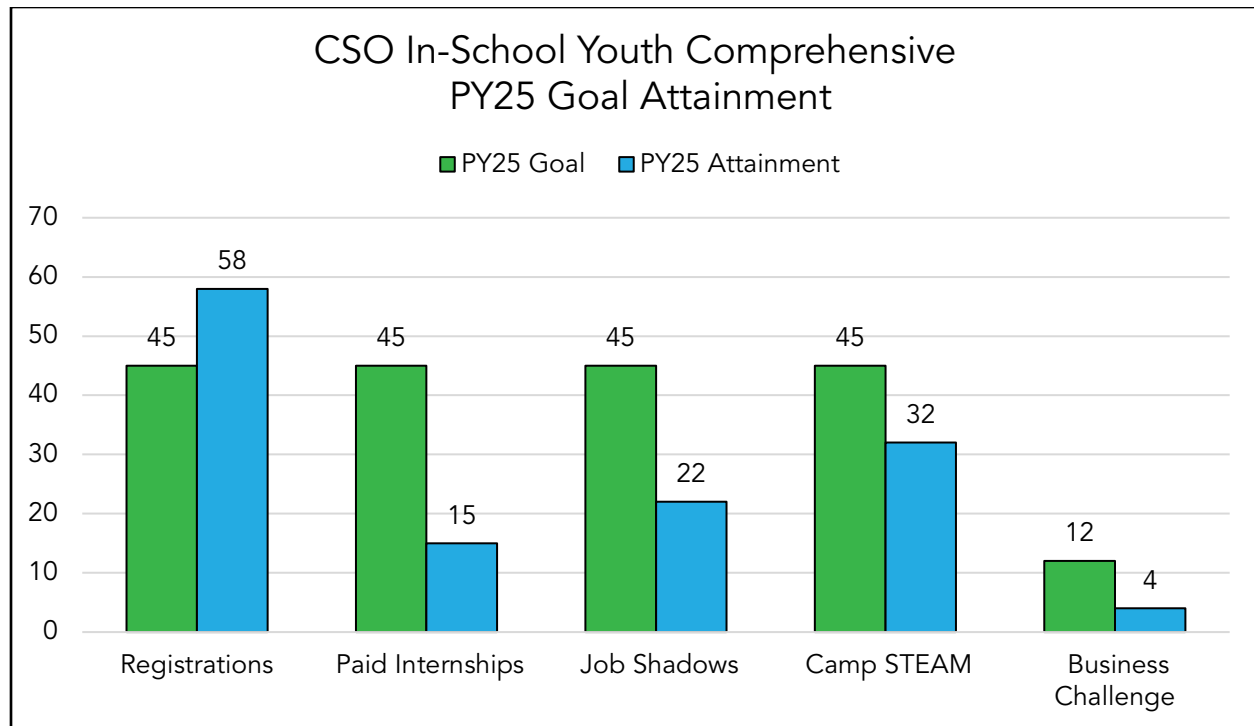
Bridges to the Future In-School Youth Program Goal Attainment

PY25 Q3: January 1, 2026- March 31, 2026

Program Provider: CSO

Program Element	Program Year Goal	Program Year Attainment	% of goal reached
Comprehensive Registrations	45	58	129%
Comprehensive Paid Work Experiences	45	15	33%
Comprehensive Job Shadows	45	22	49%
Comprehensive Camp STEAM	45	32	71%
Comprehensive Business Challenge	12	4	33%
Specialized Registrations	135	55	41%
Specialized Paid Work Experiences	30	34	113%
Specialized Job Shadows	45	22	49%
Specialized Camp STEAM	48	12	25%
Specialized Business Challenge	12	0	0%
School Districts Receiving Outreach Services (BEP Grant)	16	19	119%



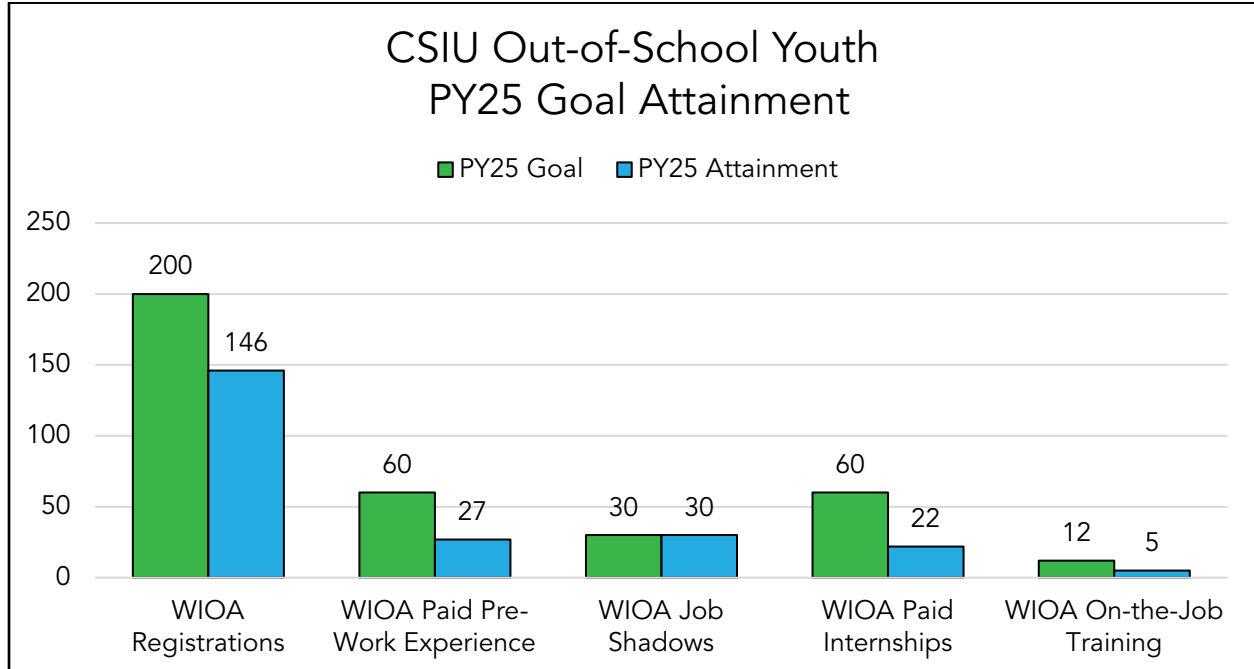


YES to the Future Out-of-School Youth Program Goal Attainment

PY25 Q3: January 1, 2026- March 31, 2026

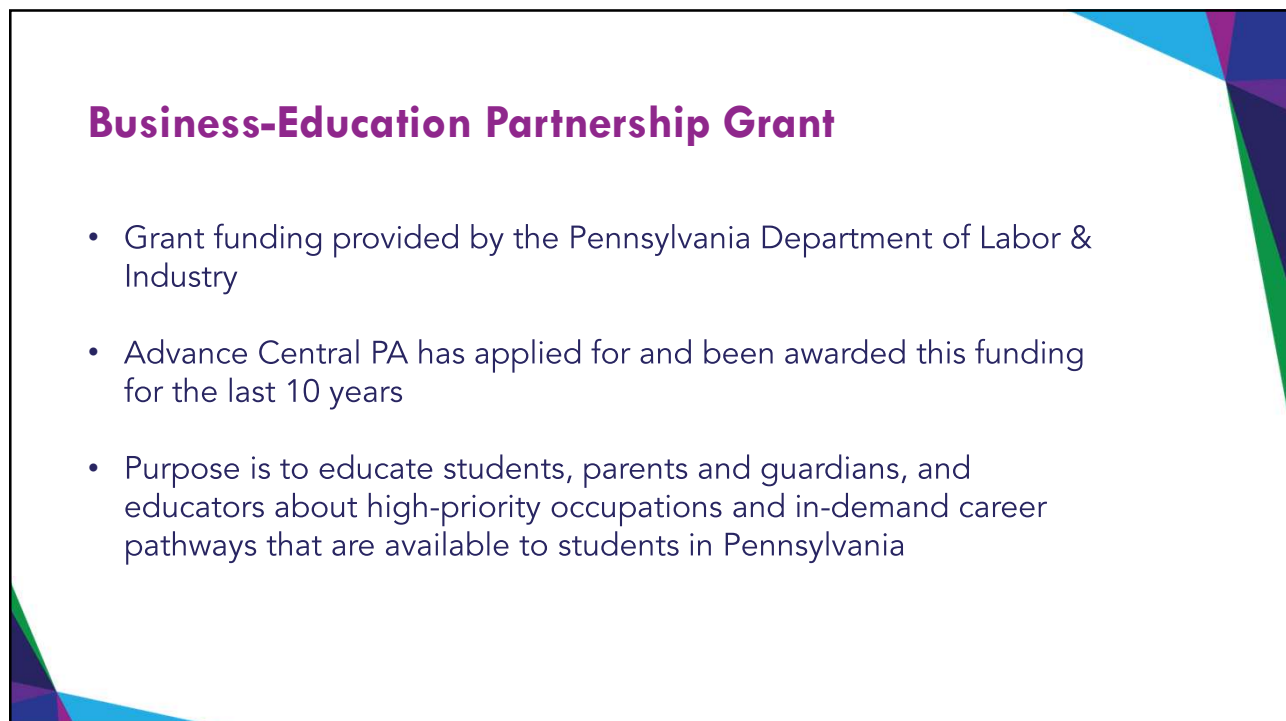
Program Provider: CSIU

Program Element	Program Year Goal	Program Year Attainment	% of goal reached
WIOA Registrations	200	146	73%
WIOA Paid Pre-Work Experience	60	27	45%
WIOA Job Shadows	30	30	100%
WIOA Paid Internships	60	22	37%
WIOA On-the-Job Training	12	5	42%





1



2

Advance Central PA's Business-Education Partnership Grant

PY24 BEP Grant | Advancing Business-Education Outcomes

- Outreach Services
- Student/Educator in the Workplace
- What's So Cool About Manufacturing?
- Path to Careers
- Virtual Reality Headsets
- Aviation STEM Camp
- Pennsylvania Free Enterprise Week



3

Outreach Services

- Available to all students in the 31 Central Region public school districts- no TANF eligibility or program enrollment required
- Provided by the Bridges to the Future In-School Youth Program staff
- Includes:
 - Mock interviewing
 - Resume development
 - Career fair assistance
 - Transition meeting attendance
 - PA CareerLink® information sessions
 - Employability skills workshops
 - Coordination of employer guest speakers

4

Student/ Educator in the Workplace

- Available to all students and educators in the 31 Central Region public school districts- no TANF eligibility or program enrollment required
- Coordinated by the Bridges to the Future In-School Youth Program staff
- Students and educators visit local businesses to learn about career pathway opportunities
- Educators deepen their understanding of workforce needs
- Grant funds are used to help districts overcome barriers to these events, including transportation and lunches

5

What's So Cool About Manufacturing?

- Created by the Manufacturers Resource Center to change student perceptions about manufacturing careers
- Middle school students pair with local manufacturers: learn what they produce, types of jobs available, visit the facility, meet the employees
- Create a video showcasing what's so cool about their manufacturer
- 12 regional contests and a state competition in PA where videos are recognized for the following categories:
 - Outstanding Overall Program
 - Viewer's Choice
 - Outstanding Team Spirit
 - Outstanding Brand Placement

6

Path to Careers

- A website that helps students and educators connect with businesses
- Streamlines communication and builds meaningful connections
- Increases access to career exploration activities
- Helps students meet graduation requirements
- BEP funding was used for start-up costs and is currently used for site updates and staff time, along with other leveraged grant funding

7

Virtual Reality Headsets

- 10 Virtual Reality Headsets, leased from Transfr VR, used by the ISY program
- Available to all students in the 31 Central Region public school districts- no TANF eligibility or program enrollment required
- Headsets come pre-loaded with career exploration software, providing users with 5-minute snapshots of a day in the life for different careers
- 14 industries and 60 careers represented (as of 4/2026, always being added to)

8

Aviation STEM Camp

- Susquehanna STEM to the Skies hosts an Aviation STEM Camp for high school students at the Penn Valley Airport
- Learn about science, technology, engineering and math concepts related to aviation, hands-on activities, fly in a full-motion aviation simulator, hear from guest speakers in aviation careers, learn about local post-secondary education opportunities
- Advance Central PA helps fund camp and provides planning, outreach, and registration support

9

Pennsylvania Free Enterprise Week

- Foundation for Free Enterprise Education: educating high school students about the American free enterprise system
- Student companies simulate the operation of a business for the equivalent of 3 years
- Camp includes motivational speakers, interactive learning exercises, development of independence, time management and responsibility skills
- Each camper is responsible for paying a \$295 registration fee, which BEP funds for 10 campers from the Central Region

10

Activities From Past Grant Periods

- Industry mixer events (Dinner & Dessert)
- Central PA Career Pathways Partnership

11

PY26 BEP Grant- Priority Activities

- Activities already being funded that are worth continuing?
- Activities you'd like to see funded?
- Activities your organization would like to participate in?

12