

Central WDA Labor Market Report

September 2025

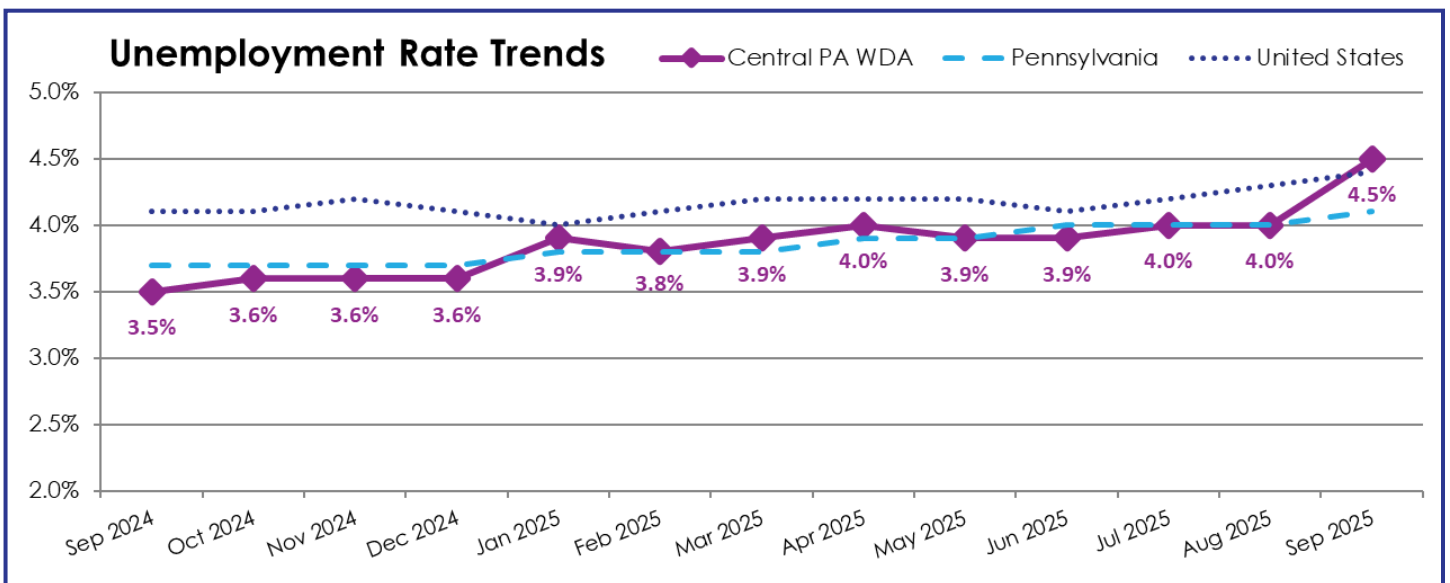
This report provides an overview of the labor market conditions in the Central Workforce Development Area (WDA), which includes Centre, Clinton, Columbia, Lycoming, Mifflin, Montour, Northumberland, Snyder, and Union Counties. In September 2025, the labor force expanded due to increases in both the employed and unemployed populations. While employment increased, it was not enough to offset the growth in unemployment, leading to a rise in the unemployment rate over the month.

Civilian Labor Force	
292,200	
Monthly Change	Annual Change
↑ 3,500	↑ 1,300

Employed Population	
279,100	
Monthly Change	Annual Change
↑ 1,800	↓ -1,600

Unemployed Population	
13,000	
Monthly Change	Annual Change
↑ 1,600	↑ 2,900

Unemployment Rates			
Region	September 2025	Monthly Change	Annual Change
Centre County	3.2%	↑	↑
Clinton County	5.2%	↑	↑
Columbia County	5.3%	↑	↑
Lycoming County	4.5%	↑	↑
Mifflin County	4.1%	↑	↑
Montour County	3.3%	↑	↑
Northumberland County	4.7%	↑	↑
Snyder County	4.2%	↑	↑
Union County	4.3%	↑	↑
Central WDA	4.5%	↑	↑
Pennsylvania	4.1%	↑	↑
United States	4.4%	↑	↑



September 2025 Preliminary Seasonally Adjusted Data (Downloaded December 2025)

Provided by the Center for Workforce Information and Analysis (CWIA), Pennsylvania Department of Labor and Industry. CWIA is not liable for the content as presented nor does CWIA necessarily endorse the statements made herein.