



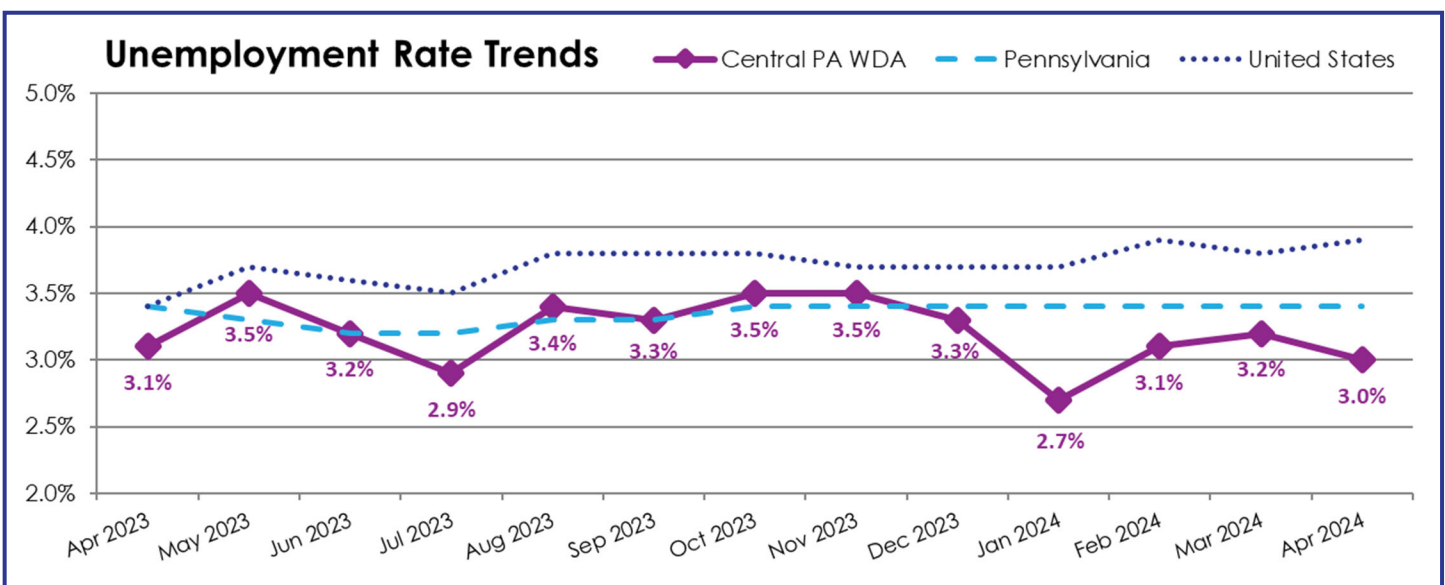
This report provides an overview of the labor market conditions in the Central Workforce Development Area (WDA), which includes Centre, Clinton, Columbia, Lycoming, Mifflin, Montour, Northumberland, Snyder, and Union Counties. In April 2024, the labor force grew while the employed population increased and the unemployed population decreased, resulting in a lower unemployment rate over the last month.

Civilian Labor Force			
305,700			
Monthly Change		Annual Change	
↑	700	↑	5,000

Employed Population			
296,500			
Monthly Change		Annual Change	
↑	1,200	↑	5,000

Unemployed Population			
9,200			
Monthly Change		Annual Change	
↓	-400	—	0

Unemployment Rates			
Region	April 2024	Monthly Change	Annual Change
Centre County	2.6%	↔	↓
Clinton County	3.7%	↓	↓
Columbia County	3.5%	↓	↔
Lycoming County	3.3%	↔	↓
Mifflin County	3.4%	↓	↓
Montour County	2.5%	↓	↓
Northumberland County	3.9%	↔	↑
Snyder County	3.4%	↔	↑
Union County	2.8%	↓	↑
Central WDA	3.0%	↓	↓
Pennsylvania	3.4%	↔	↔
United States	3.9%	↑	↑



April 2024 Preliminary Seasonally Adjusted Data (Downloaded May 2024)

Provided by the Center for Workforce Information and Analysis (CWIA), Pennsylvania Department of Labor and Industry. CWIA is not liable for the content as presented nor does CWIA necessarily endorse the statements made herein.