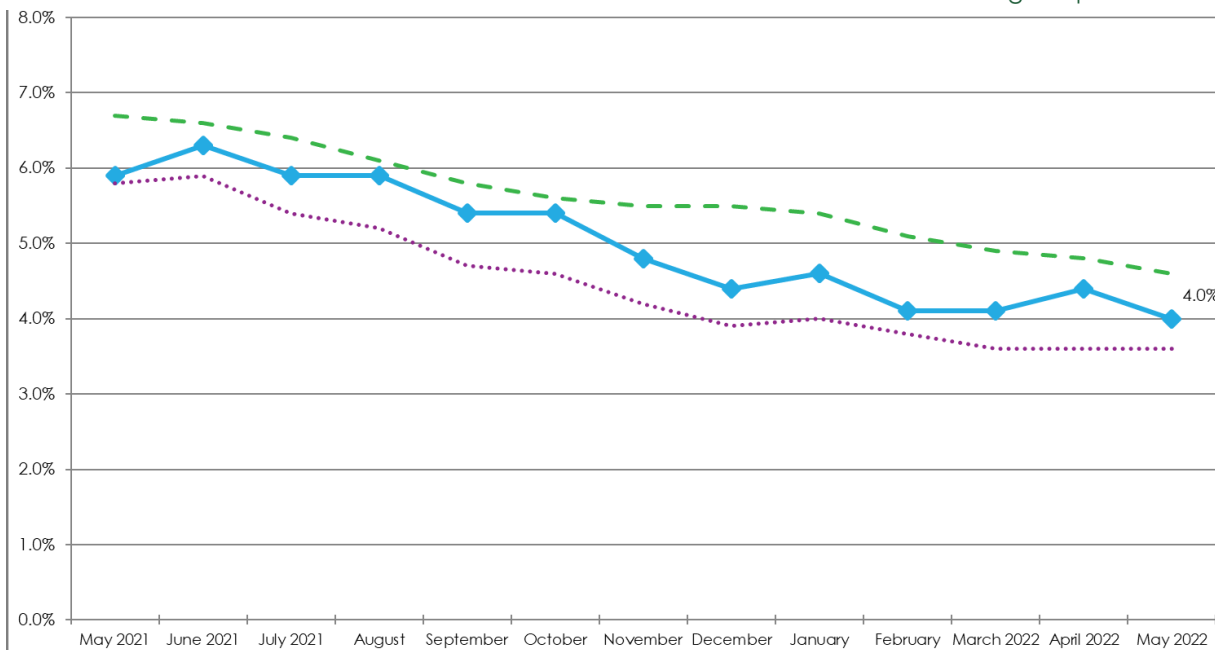


Central Pennsylvania Labor Market Status Report -- May 2022



Unemployment Rates			
Geography	May 2022	Monthly Change	Annual Change
Centre	3.3%	↓	↓
Clinton	5.2%	↓	↓
Columbia	4.2%	↓	↓
Lycoming	4.8%	↓	↓
Mifflin	4.7%	↓	↓
Montour	3.2%	↑	↓
Northumberland	4.9%	↓	↓
Snyder	3.8%	↓	↓
Union	3.4%	↓	↓
Central PA WDA	4.0%	↓	↓
Pennsylvania	4.6%	↓	↓
United States	3.6%	↔	↓



	May 2022	April 2022	Monthly Change	May 2021	Annual Change
Central PA WDA					
Labor Force	293,500	292,000	↑ 1,500	293,700	↓ -200
Employed	281,600	279,200	↑ 2,400	276,300	↑ 5,300
Unemployed	11,900	12,800	↓ -900	17,400	↓ -5,500
Unemployment Rate	4.0%	4.4%	↓ -0.4%	5.9%	↓ -1.9%
Pennsylvania					
Labor Force	6,440,000	6,410,000	↑ 30,000	6,435,000	↑ 5,000
Employed	6,142,000	6,102,000	↑ 40,000	6,004,000	↑ 138,000
Unemployed	298,000	308,000	↓ -10,000	431,000	↓ -133,000
Unemployment Rate	4.6%	4.8%	↓ -0.2%	6.7%	↓ -2.1%
United States					
Labor Force	164,376,000	164,046,000	↑ 330,000	160,801,000	↑ 3,575,000
Employed	158,426,000	158,105,000	↑ 321,000	151,550,000	↑ 6,876,000
Unemployed	5,950,000	5,941,000	↑ 9,000	9,251,000	↓ -3,301,000
Unemployment Rate	3.6%	3.6%	↔ 0.0%	5.8%	↓ -2.2%

Preliminary May 2022 seasonally adjusted data (downloaded July 2022)

Provided by the Center for Workforce Information and Analysis (CWIA), Pennsylvania Department of Labor and Industry. CWIA is not liable for the content as presented nor does CWIA necessarily endorse the statements made herein.

Civilian Labor Force

Centre County	77,000
Clinton County	17,200
Columbia County	33,200
Lycoming County	54,600
Mifflin County	20,900
Montour County	9,000
Northumberland County	41,900
Snyder County	19,700
Union County	19,700

The labor force is comprised of individuals who are working, waiting for a layoff to end, or are actively seeking work. The graph below highlights changes in the civilian labor force as a percentage of the area's total civilian labor force.

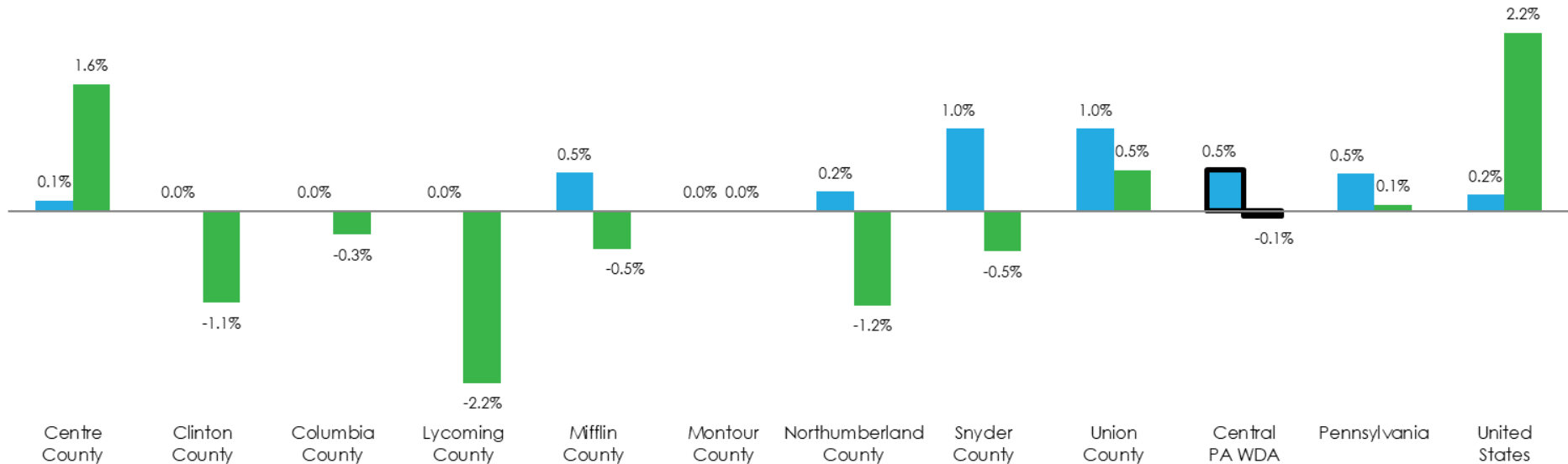


May 2022

	Change Since		
	May 2022	April 2022	May 2021
Central PA WDA	293,500	1,500	-200
Pennsylvania	6,440,000	30,000	5,000
United States	164,376,000	330,000	3,575,000

Percent Change in Civilian Labor Force: May 2022

■ Month Change ■ Year Change



Preliminary May 2022 seasonally adjusted data (downloaded July 2022)

Provided by the Center for Workforce Information and Analysis (CWIA), Pennsylvania Department of Labor and Industry. CWIA is not liable for the content as presented nor does CWIA necessarily endorse the statements made herein.

Employed Population

Centre County	74,400
Clinton County	16,400
Columbia County	31,800
Lycoming County	52,000
Mifflin County	19,900
Montour County	8,700
Northumberland County	39,800
Snyder County	19,000
Union County	19,000

The employed population includes individuals who are working. The graph below highlights changes in employment as a percentage of the area's total employment.

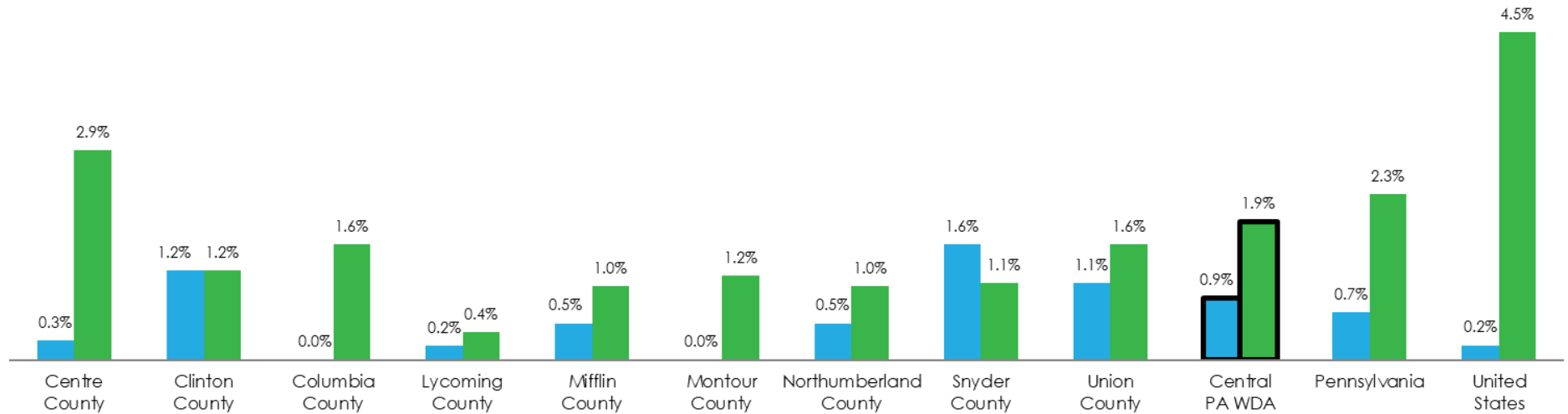


May 2022

	Change Since		
	May 2022	April 2022	May 2021
Central PA WDA	281,600	2,400	5,300
Pennsylvania	6,142,000	40,000	138,000
United States	158,426,000	321,000	6,876,000

Percent Change in Employed Population: May 2022

■ Month Change ■ Year Change



Preliminary May 2022 seasonally adjusted data (downloaded July 2022)

Provided by the Center for Workforce Information and Analysis (CWIA), Pennsylvania Department of Labor and Industry. CWIA is not liable for the content as presented nor does CWIA necessarily endorse the statements made herein.

Unemployed Population

Centre County	2,600
Clinton County	900
Columbia County	1,400
Lycoming County	2,600
Mifflin County	1,000
Montour County	300
Northumberland County	2,000
Snyder County	800
Union County	700

The unemployed population is made up of individuals who are not working, but are waiting for a layoff to end or are actively seeking work. The graph below highlights changes in unemployment as a percentage of the area's total unemployment.

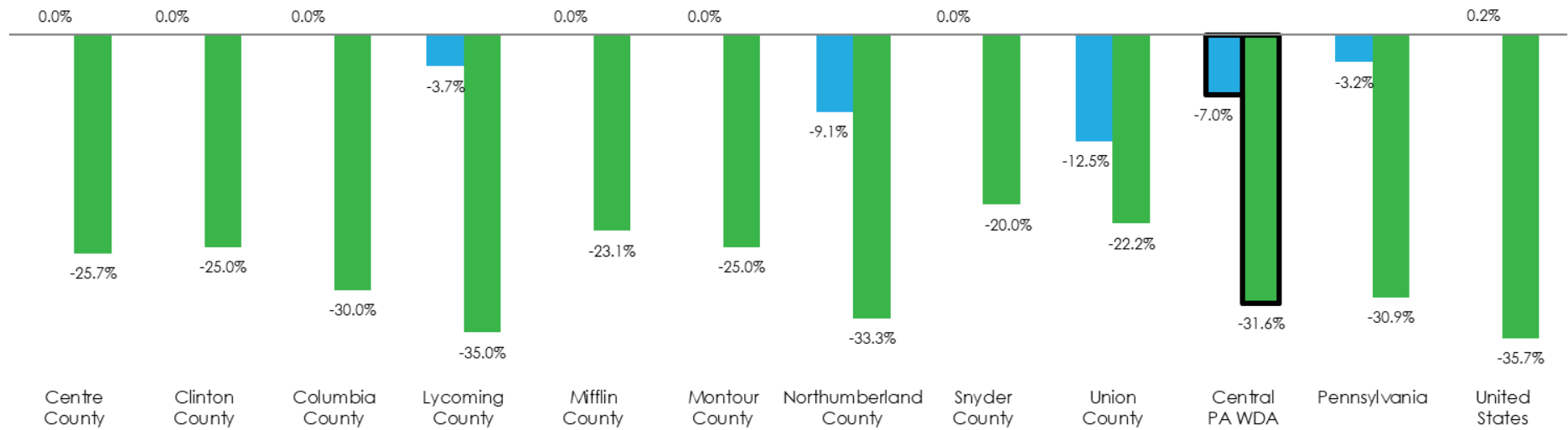


May 2022

	Change Since		
	May 2022	April 2022	May 2021
Central PA WDA	11,900	-900	-5,500
Pennsylvania	298,000	-10,000	-133,000
United States	5,950,000	9,000	-3,301,000

Percent Change in Unemployed Population: May 2022

■ Month Change ■ Year Change



Preliminary May 2022 seasonally adjusted data (downloaded July 2022)

Provided by the Center for Workforce Information and Analysis (CWIA), Pennsylvania Department of Labor and Industry. CWIA is not liable for the content as presented nor does CWIA necessarily endorse the statements made herein.

Unemployment Rates

	May 2022	April 2022	May 2021
Centre County	3.3%	3.4%	4.6%
Clinton County	5.2%	5.4%	7.0%
Columbia County	4.2%	4.3%	6.1%
Lycoming County	4.8%	5.0%	7.1%
Mifflin County	4.7%	4.9%	6.4%
Montour County	3.2%	3.1%	4.6%
Northumberland County	4.9%	5.4%	7.2%
Snyder County	3.8%	4.2%	5.2%
Union County	3.4%	4.0%	4.6%
Central PA WDA	4.0%	4.4%	5.9%
Pennsylvania	4.6%	4.8%	6.7%
United States	3.6%	3.6%	5.8%

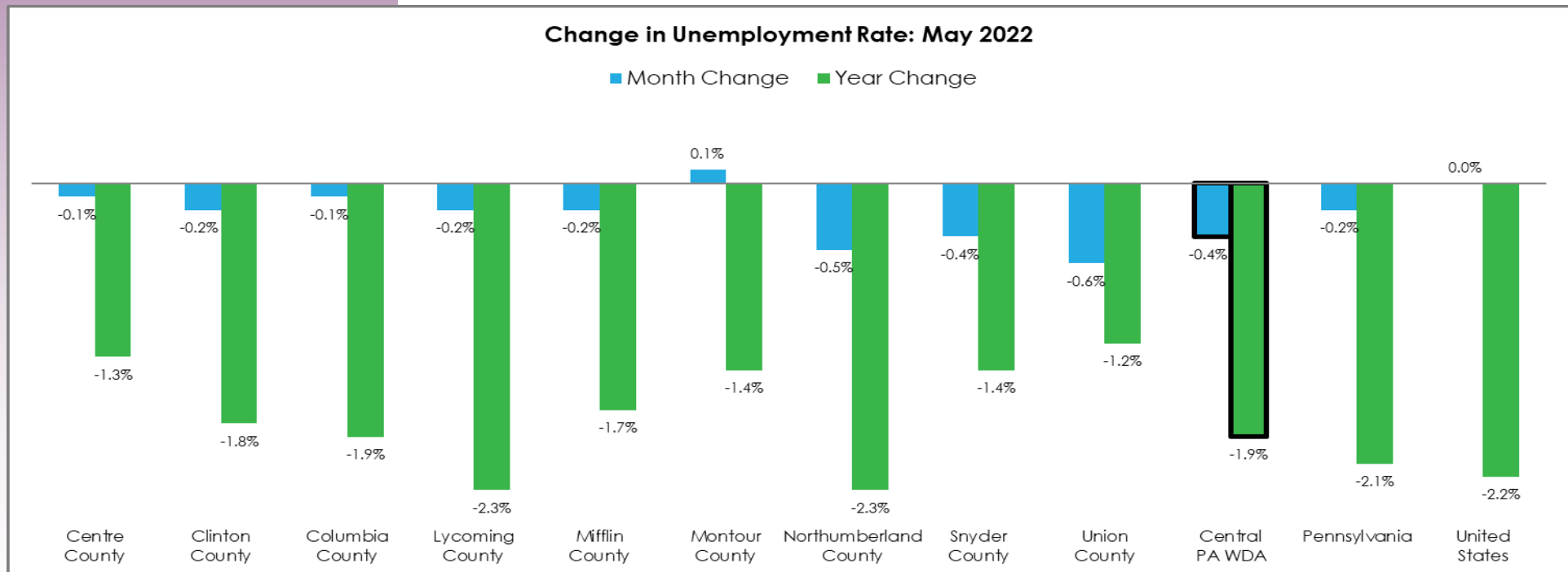


May 2022

The unemployment rate represents the proportion of individuals in the civilian labor force who are not working, but are waiting for a layoff to end or are actively seeking work. The graph below highlights changes in unemployment rates.

Change in Unemployment Rate: May 2022

■ Month Change ■ Year Change



Preliminary May 2022 seasonally adjusted data (downloaded July 2022)

Provided by the Center for Workforce Information and Analysis (CWIA), Pennsylvania Department of Labor and Industry. CWIA is not liable for the content as presented nor does CWIA necessarily endorse the statements made herein.